

Vision for Growth, Safety, Innovation, & Opportunity

Maize USD 266 Facility Planning Committee, April 2019





Current School Capacities

2018-19

91%

Elementary Schools

Five buildings are at 91 percent capacity.



90%

Middle Schools

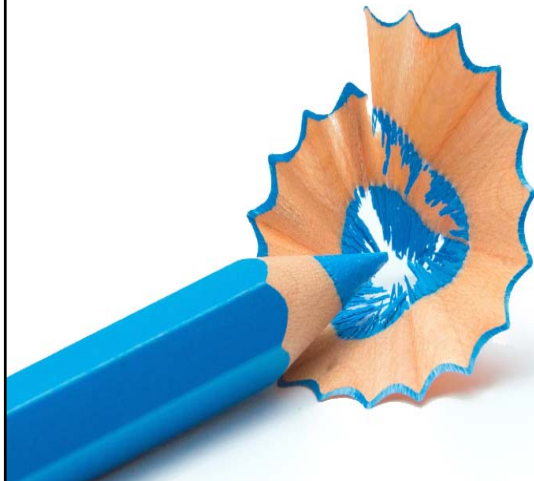
Two buildings are at 90 percent capacity.



74%

High Schools

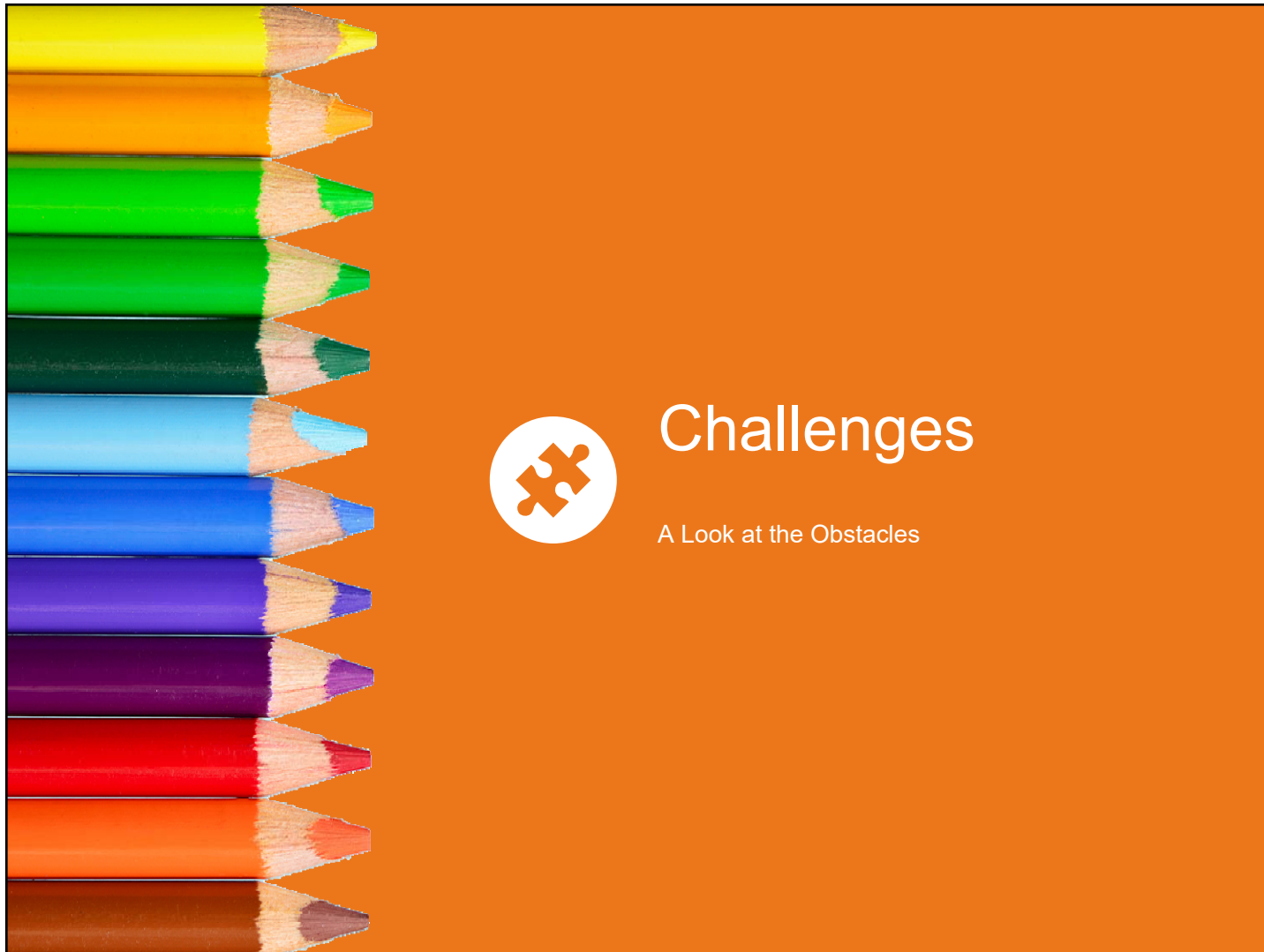
Two buildings are at 74 percent capacity.



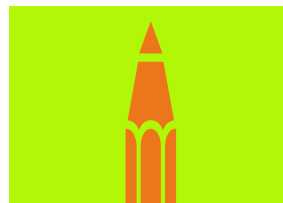
Facility Planning 2019

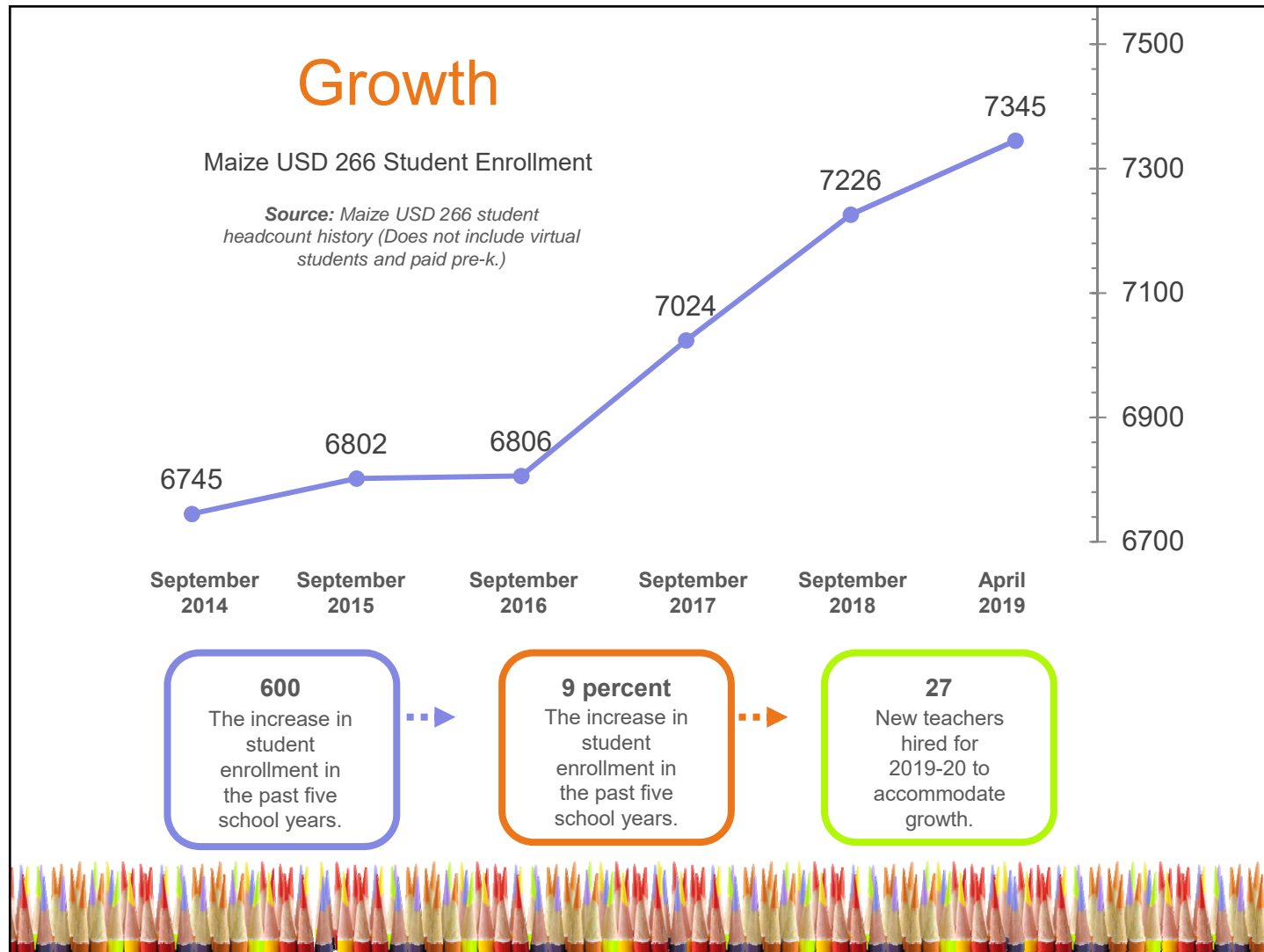
	Current Enrollment		Future Capacity			
	Total Enroll	Kids / Grade	Total Enroll	Kids / Grade	Capacity	
MSE	663	111	750	115	88%	91%
MCE	718	120	730	122	98%	
VES	593	99	730	108	81%	
PWS	645	108	750	125	86%	
MES	565	94	570	92	99%	
MMS	867	289	950	317	91%	90%
MSMS	846	282	950	317	89%	
MHS	1191	298	2200	550	54%	74%
MSHS	1031	258	1100	275	94%	
TOTAL	7119		8570		89%	





A Look at Growth





Media Coverage of Growth

Kake News
ON YOUR SIDE
 AT 5, 6, & 10PM

[News](#)
[Weather](#)
[Sports](#)
[Video](#)
[Community](#)

kmuw
WICHITA 89.1
 Wichita's NPR Station

[Listen Live](#)
[Donate](#)

[Home](#)
[News](#)
[Programs & Podcasts](#)
[Music](#)
[Commentary](#)
[Events](#)
[About](#)
[Support](#)
[Search](#)

Growing pains hit Maize Schools

Posted: Mar 19, 2019 5:31 PM CDT
Updated: Mar 19, 2019 5:31 PM CDT
written by Pilar Pedraza [CONNECT](#)

Maize Considering Building Two New Schools To Help With Overcrowding

By AUDREY KORTE • MAR 25, 2019

[Share](#)
[Tweet](#)
[Email](#)

MAIZE, Kan. (KAKE) - "You can't drive up and down Maize Road for very long and not notice the district is growing," said Brandt Wilson, whose children attend the Maize Public Schools.

One Kansas school district is growing nearly twice as fast as expected, but expanding isn't as simple as asking parents for permission to build new schools.

Middle school students eat lunch in a crowded

Special Education

Potential Changes Coming to Area Schools



Space Needs

Change likely coming in 2021-22
that will require additional space
at Maize USD 266.





YMCA



- Uses and Issues

- Keeping up With Area Schools

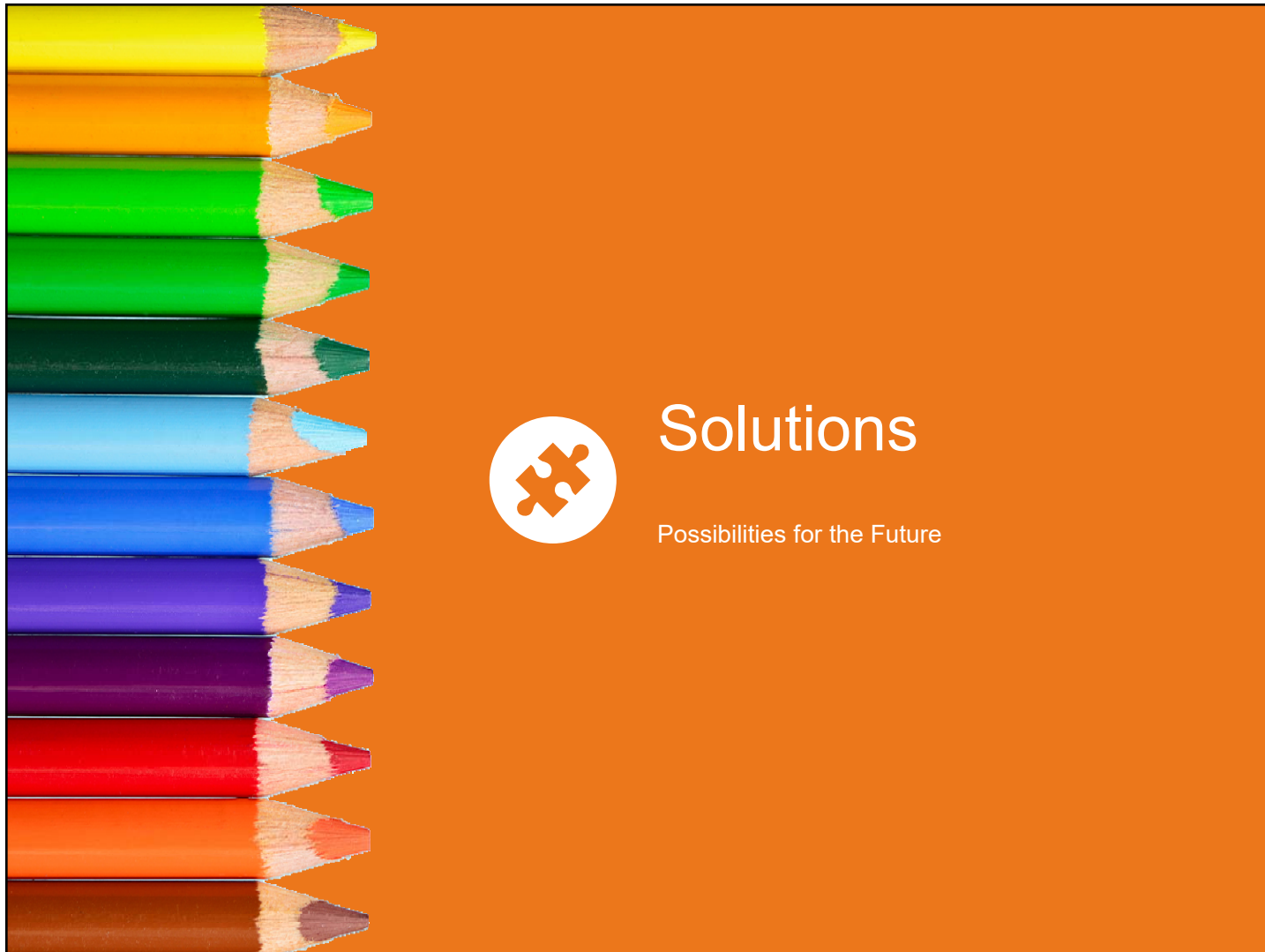


Playgrounds



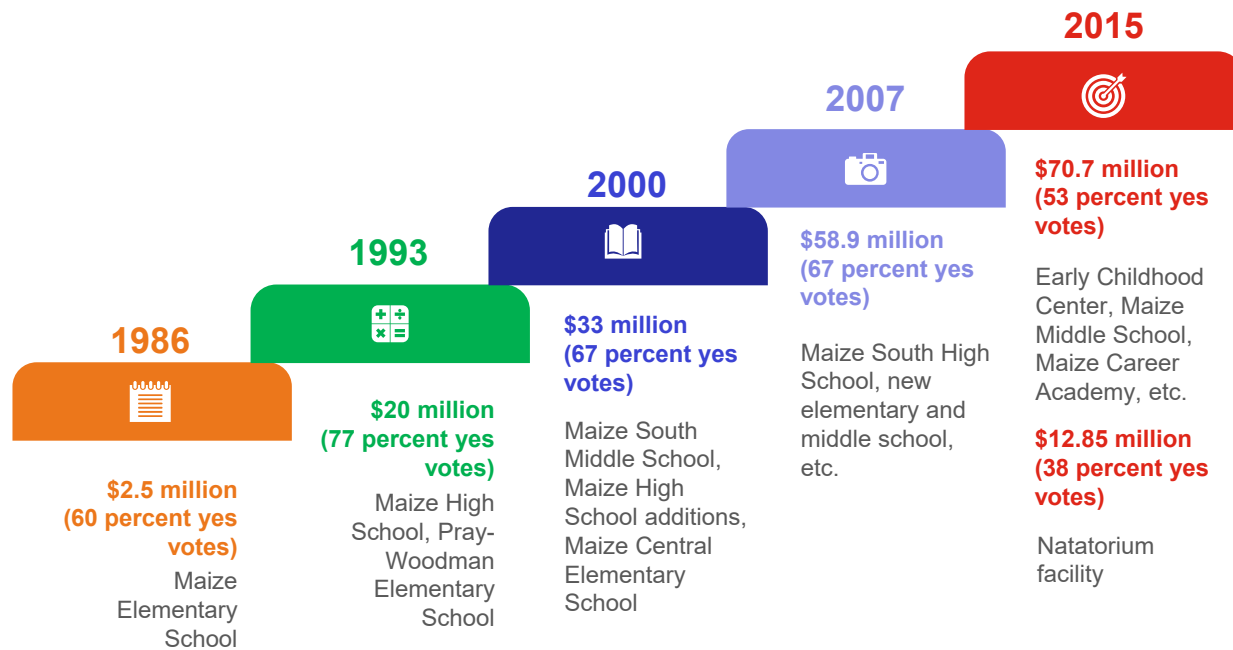
- Replace Gravel With Rubber Pellets and Irrigated Grass
- Create Comparable Environments





Success History

Most Recent Five Maize USD 266 Bond Elections
Thirty-three years of history



Committee Members

Many perspectives represented

Maize Board of Education Members

Darin Augustine
Richard Bell
Brooklyn Blasdel
Shannon Bohm
CoCo Bontrager
Dr. Chris Botts
Tiffany Broberg
Andrea Burnett
Chad Cramer
Dr. Scott Crawford
Kate Doerksen
Michael Dome
Dr. Karen Duling
Clark Fichtl
Aaron Finck
Jessica Fisher
Dave Hickerson
Dr. Chad Higgins
David Jennings
Matt Jensby

Students



Employees



Parents

Kara McCluskey
Dr. Brock Lofgren
Joe Naputi
Jenny Nash
Andrea Nietfield
Butch Nuss
Elizabeth Parker
Rachel Pederson
Aenya Richards
Sarah Rivers
Mike Russell
James Shurts
Leslie Staver
Christina Swedberg
Chris Todd
Stacy Wagner
Corey Wendler
Kyle White
Bryant Wilks
Steve Williams
Brandt Wilson



Committee Work

A Review of the Process



Presentations to:

- Parent Group Meeting (PTOs and Site Councils)
 - Maize High School and Maize South High School Booster Clubs
 - Maize Recreation Commission
 - City of Maize Administration
 - Rotary Club
- Every Maize USD 266 School Staff Meeting

January 2019

Introductions, Data, Challenges, Needs, Options, Feeder System Review, Transition Research, Next Steps



February 2019

Information Sharing, Objectives, Pros and Cons of Options, Potential Locations, School Funding, Timeline



March 2019

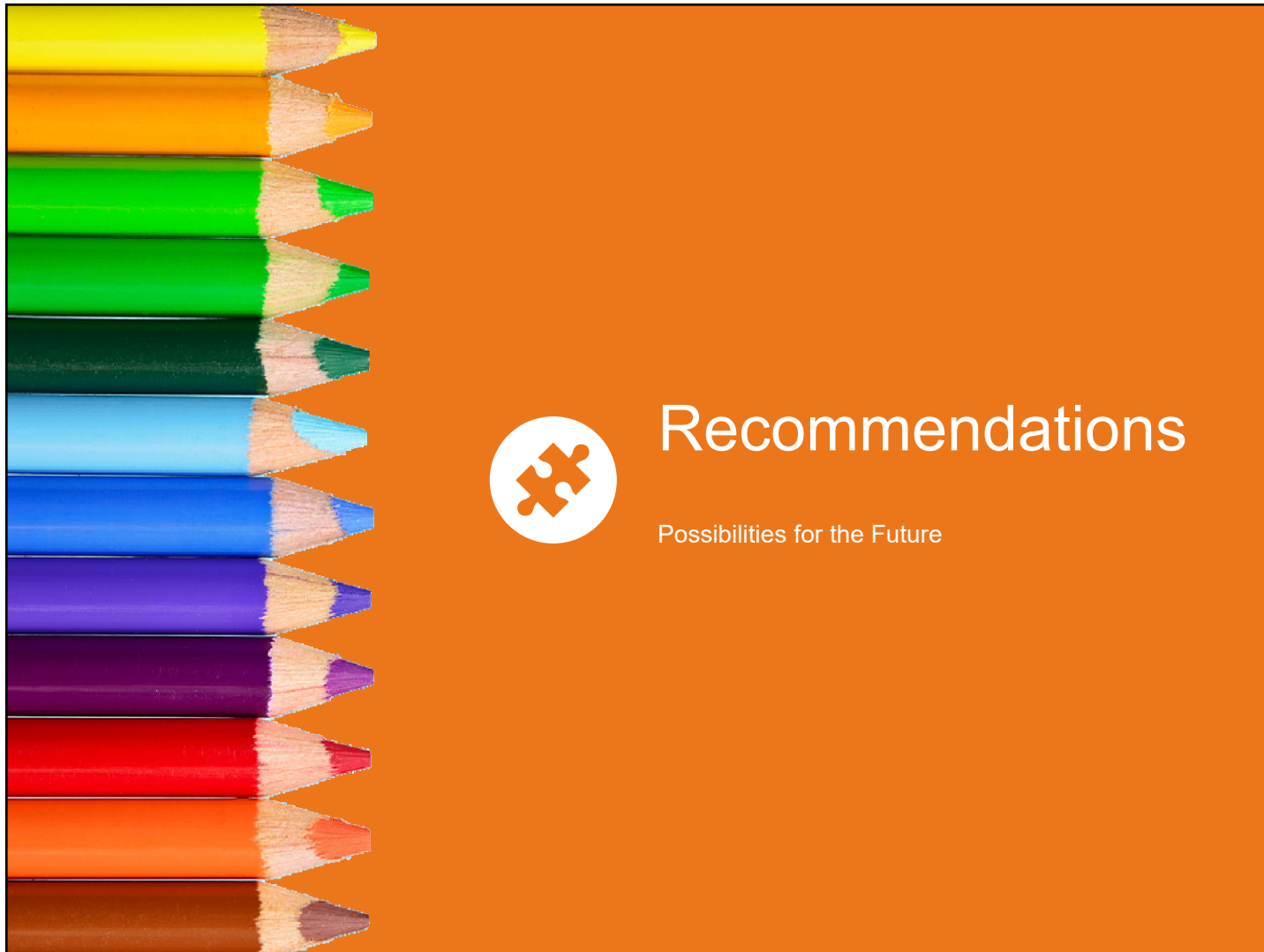
Review Feedback, Additional Considerations, Intermediate Centers, Preliminary Costs




April 2019

Team Survey, Maize Board of Education Input, Legal/Legislative Update, Timeline Update, Refine Priorities, Consider Ballot Language, Suggested Organization for Next Steps





A photograph of a female teacher with blonde hair, wearing a patterned sleeveless top, standing in front of a classroom. She is gesturing towards a large projection screen. The screen displays a graphic with a hand icon and the text 'HANDS & WORDS ARE NOT FOR HURTING'. Below this, there are arrows pointing left and right, labeled 'Sym' and 'Pledge' respectively. The teacher is facing a group of students whose backs are to the camera.

\$

Cost

📖

Learning

🏠

Facilities

⊕ ⊕
⊗ =



Enrollment
Growth

There is no one easy solution.

What is best for the future of Maize USD 266?

Proposal: Question One

Growth & Safety

Bond Question(s) Items	Projected Cost
Intermediate Centers (5th and 6th Grade) X 2 <ul style="list-style-type: none"> Solves district's student enrollment challenges and relieves crowding in elementary and middle schools in a way that meets students' developmental learning needs Elementary K-4, Middle 7-8, including kitchen, fine arts, special education, outdoor spaces 	
Maize High School <ul style="list-style-type: none"> Upgrades a 23-year-old building to meet educational needs and ongoing maintenance Flooring, restrooms, science labs, entrance, lunchroom, kitchen, ceilings, lighting 	
Maize South High School <ul style="list-style-type: none"> Meets needs for building's capacity and student learning opportunities Classroom additions (art, orchestra, general), kitchen serving, Career and Technical Education potential 	
Safety/Security <ul style="list-style-type: none"> Provides modern resources to meet district's top priority: the safety of students and employees Complete High School Maize shelter, access monitoring, cameras, classroom doors 	
Estimated Total	\$79.5 million



Intermediate Schools

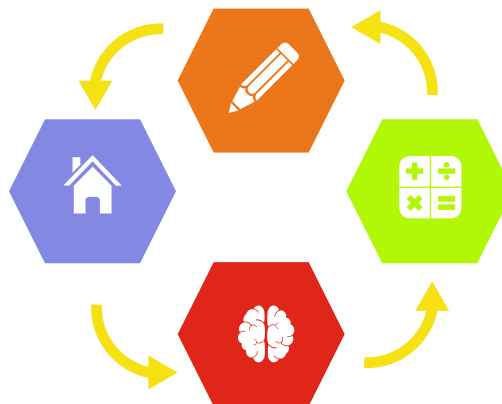
The Option Solves Numerous Issues

Location

One school per feeder (Maize Middle-Maize High and Maize South Middle-Maize South High) housing fifth and sixth grades would be located and constructed on each campus.

Developmentally Appropriate

The schools would be designed with fifth- and sixth-grade students in mind, including for their developmental needs, as well as the transition from elementary school to middle school.



Long-Term Needs

Intermediate Schools provide the district with a solution for continued student enrollment growth, as well as flexibility for various building uses in the long-term future.



Relieves Pressure From Crowded Buildings

Relocating one grade each from elementary and middle schools alleviates crowding concerns in the district's most full buildings.

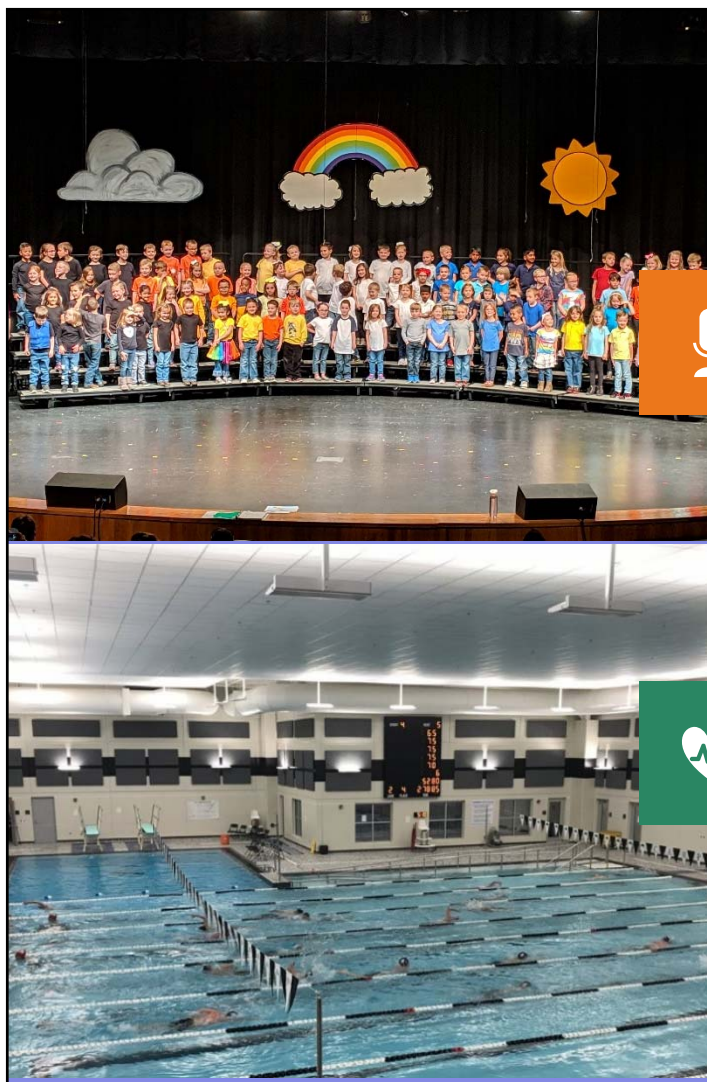


Proposal: Question Two

Innovation & Opportunity

Bond Question(s) Items	Projected Cost
<p>Auditorium/Indoor Pool</p> <ul style="list-style-type: none"> • Provides a venue for growing school district and access for every student in the district for fine arts performances, events, and opportunities currently difficult to schedule • Auditorium with 950 seats and sound and light • For the first time in district history, allows for a place to incorporate swimming into curriculum and space for swim teams and other physical education-related uses, currently difficult to schedule • Pool with standard eight 25-yard lanes, 300 seats, dive well, zero-entry 	
<p>Elementary Schools</p> <ul style="list-style-type: none"> • Provides safe outdoor play places for all elementary school students • Opportunity to assemble new indoor STEAM labs for all elementary school students to further grow and develop important innovation skills • Playgrounds with rubber tile fall zones and irrigated sod 	
Estimated Total	\$28.7 million





Pray-Woodman Elementary School vocal music concert at Maize High School, 2019

Auditorium

Maize USD 266's high school auditoriums are used frequently for performances by all students and schools. Middle school cafeteriums are not ideal performance spaces. A new space is needed for fine arts for all students.

Auditorium / Pool

Indoor Pool

Many area districts maintain a swimming pool for various programs and curriculum. Currently, life-saving swimming instruction is not available to Maize USD 266 students. The district's high school swim teams practice at the Greater Wichita YMCA, limiting access for the teams and YMCA members in the community alike.

Haysville USD 261 swimming pool, opened in 2018

Use/Operations



Keeping the Community, District on Target

Many area school districts offer a swimming pool for students and programming, providing students and the community with an opportunity and edge Maize USD 266 students currently do not have.



Elementary School Curriculum

Students for the first time will have access to Maize USD 266 instruction about water safety and swimming, including life-saving skills and enhanced wellness lessons.



Fiscal Responsibility

A shared facility would save costs with shared parking, lighting, restrooms, locker rooms, lobby, and more.



Team Practice/Meets

All high school swimmers will have better access to flexible practice times, as well as the ability for the first time in district history to host home meets on campus.



Special Needs

Students with special needs will have access to a new learning environment that accommodates them.



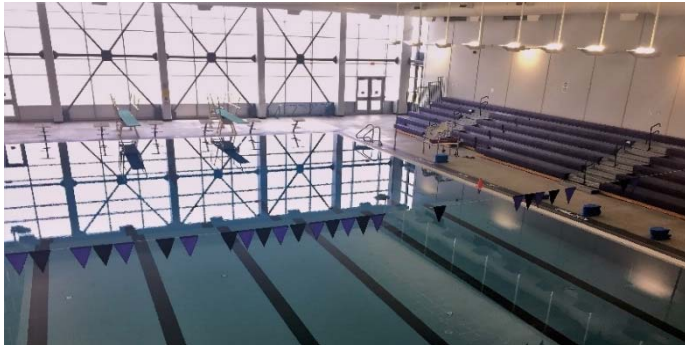
Special Education Pool Access

- **Seven special education programs use the YMCA's indoor pool.**
- **Students visit as often as twice a week.**
- **Nearly 29 percent of programs visit at least weekly.**
- **Uses include physical therapy and meeting sensory needs.**



USD 259 Pools

Wichita Northeast High School



Wichita Heights High School



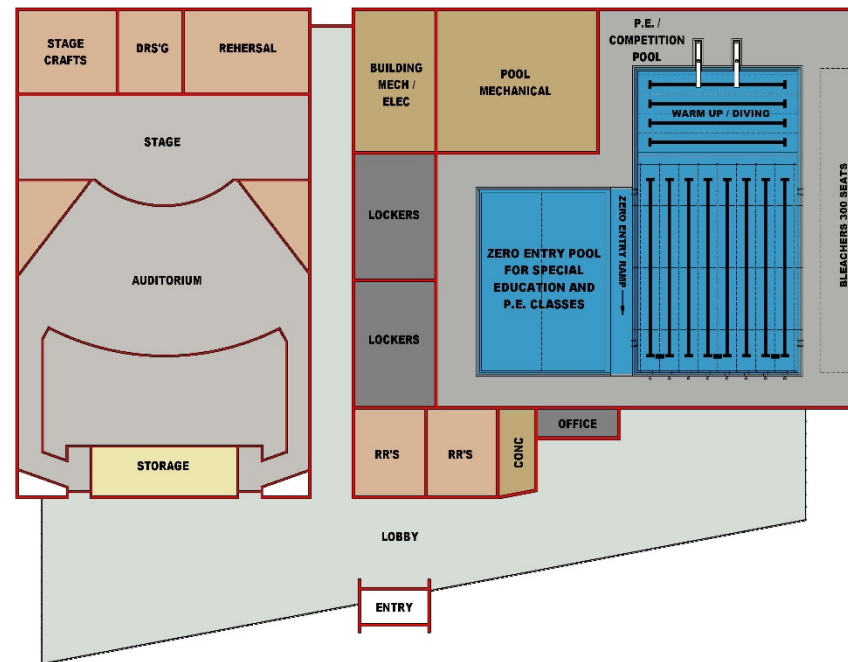
Wichita North High School



Wichita Southeast High School



Auditorium / Pool



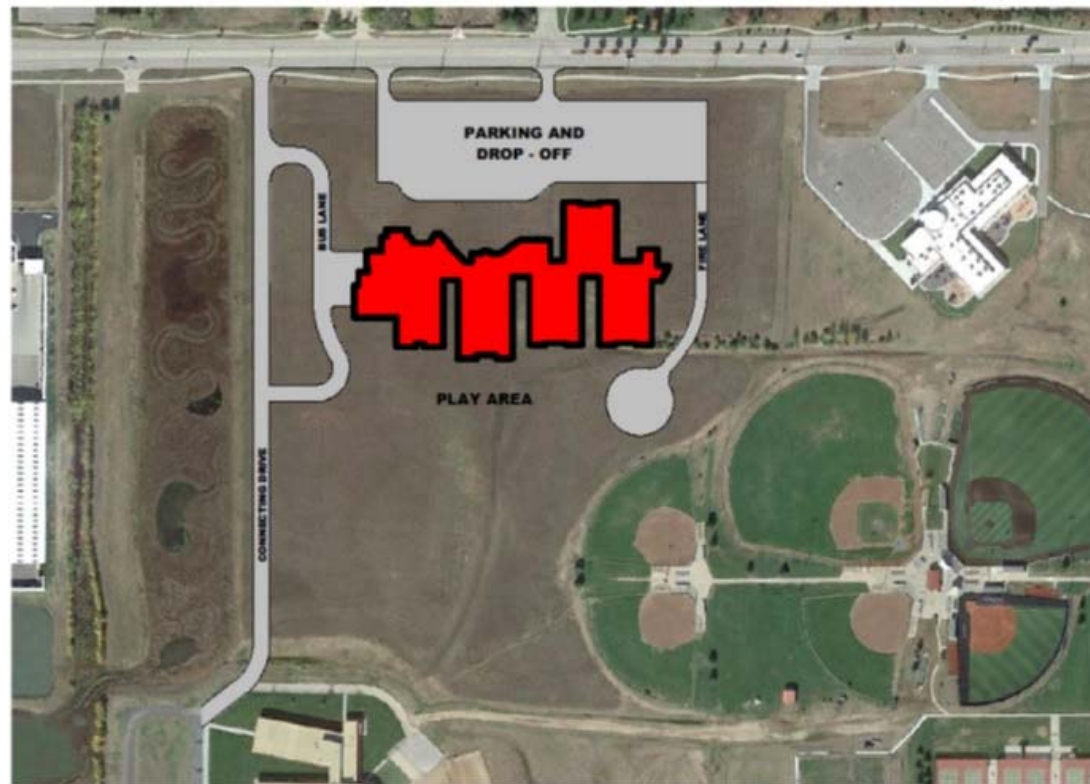
SCHEMATIC AUDITORIUM / INDOOR POOL FACILITY

05/06/19

SJCFarchitecture

Immersion Center | 257 E. Broadway | Wichita, Kansas 67202-2325 | 316.844.1671 | www.immersioncenter.org

Possible Locations



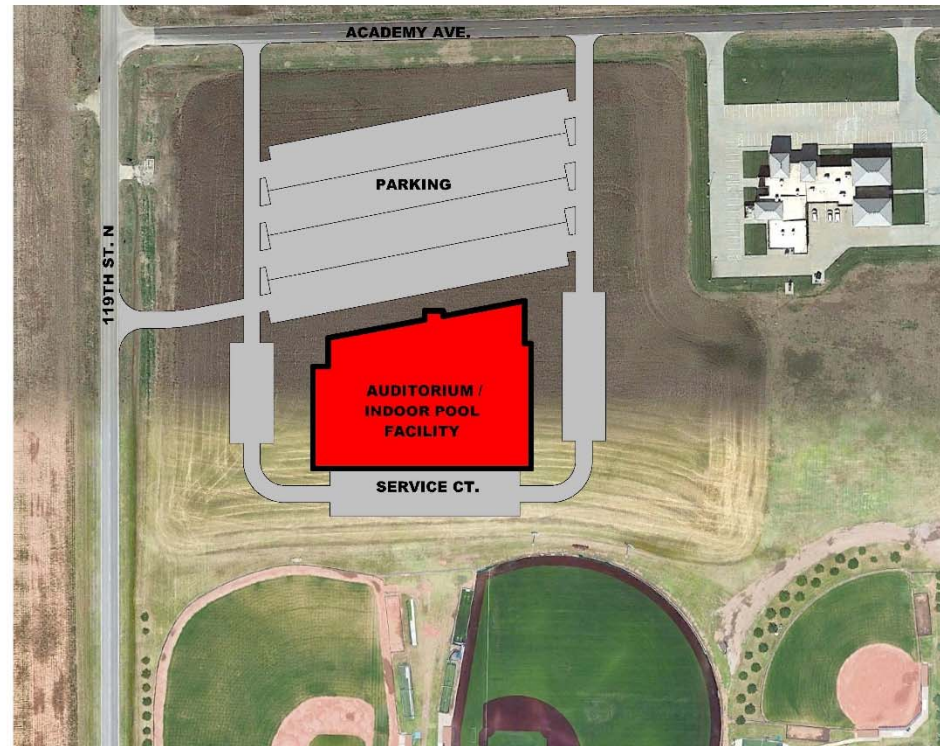
SCHEMATIC NEW 5/6 CENTER - 750 STUDENTS

04/30/19

SJCFarchitecture



Possible Locations



SCHEMATIC AUDITORIUM / INDOOR POOL FACILITY

05/06/19

SJCFarchitecture

Project Date: 05/06/2019 Project Name: SJCF 05/06/2019 11:00 AM

001



Possible Locations



SCHEMATIC AUDITORIUM / INDOOR POOL FACILITY

05/06/19

SJCFarchitecture

Copyright © 2019 SJCFarchitecture / All rights reserved. 05/06/19



Possible Locations



SCHEMATIC SHARED SITE - WEST PROPERTY

05/06/19

SJCFarchitecture

Studio Center | 201 N. 2nd Street | Suite 100 | Minneapolis, MN 55401 | 612.466.8111 | sjcf.com



Total Bond Proposal



Question One: Growth & Safety

\$79.5 million



Question Two: Innovation & Opportunity

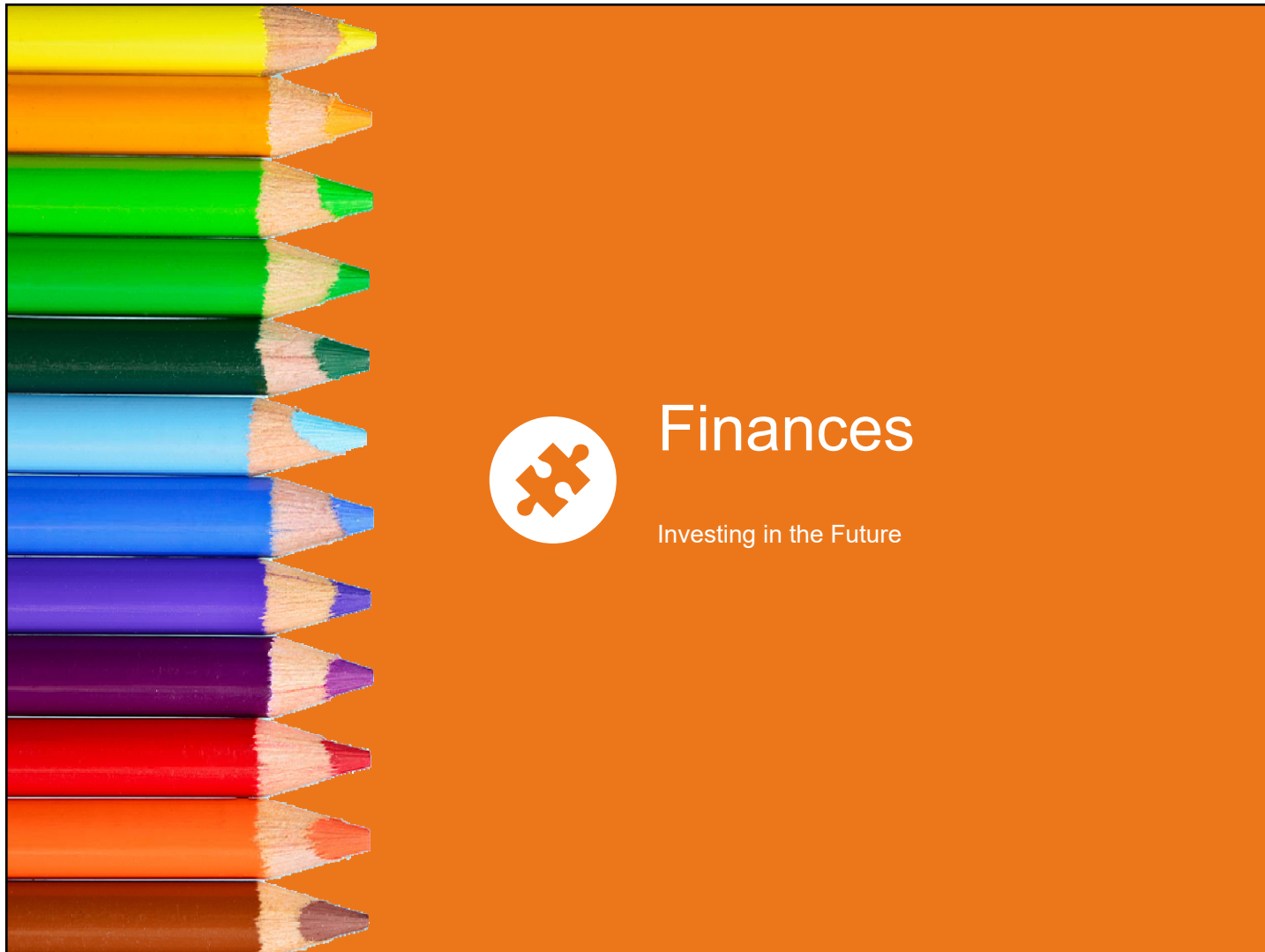
\$28.7 million



Estimated Total

\$108.2 million





Financial Options

Considering Sources of Funding



B

Bond Dollars

Kansas school districts can seek approval from community voters to issue bonding to build and/or improve schools, purchase land, and pursue other major projects.

The bond must receive approval from the board of education, Kansas State Department of Education, and community members via a public election.

Maize USD 266 would receive 15-18 percent state aid on a bond, but there is a state cap on how much funding is available to schools each year.

CO

Capital Outlay

This fund allows the Maize Board of Education to levy taxes for limited use for equipment, property purchases, facility additions, improvements, lots, roofs, vehicles, etc.

Its 8 mill levy cap brings in \$5.8 million a year. Annual expenses are \$2 million a year plus, and the district has \$20 million in reserve. Infrastructure costs will continue to rise and reserves can be used for larger projects.

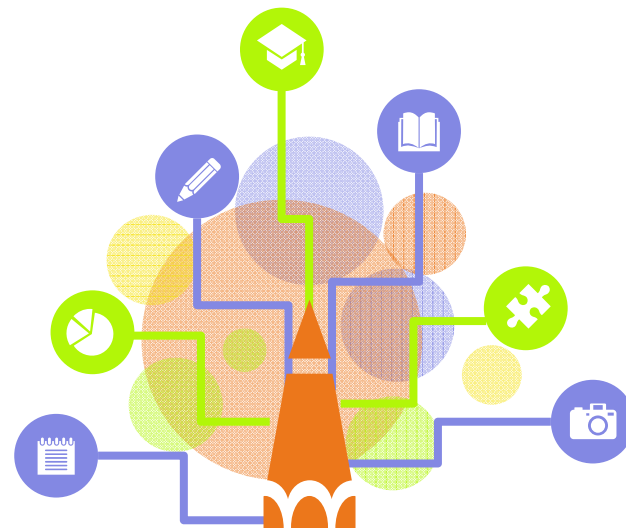
Maize USD 266's current state aid is 42 percent of the taxes levied in the Capital Outlay Fund.



Mill Levy Analysis

Bond Issue Projections:

- Growth in Assessed Valuation:
3 percent to 5 percent
- State Aid: 15% to 18%
- Interest Rate: 3.37%-3.57%
- Current B&I Levy: 19.451
- 15-20-Year Term
 - Q1 vs. Q1/Q2
- Levy Reduction in 2026
- Past Refinancing:
 - Lower Interest Rate
 - Early Payoff



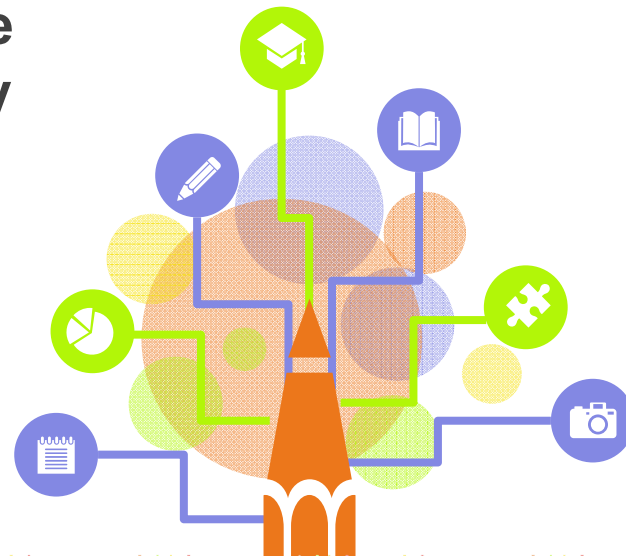
Mill Levy Analysis

This Proposed 2019 Bond Issue Would Increase the Bond & Interest Mill Levy **ZERO**

The mill levy is the tax rate applied to assessed valuation to generate tax dollars.

In 2018-19, Maize USD 266's mill levy dropped from 60.550 to 59.790, the third annual decrease from 62.826 since 2015-16.

Maize USD 266's mill levy remains competitive with area districts.



What Happens Without a Bond

What are Maize USD 266's Options to Meet Needs?

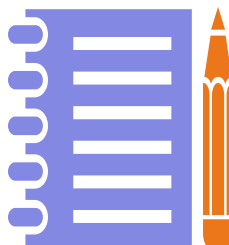
The Time is Now

New schools take about two years to design and build, and Maize USD 266 will run out of room in at least one of its schools by 2020.



Meeting Needs

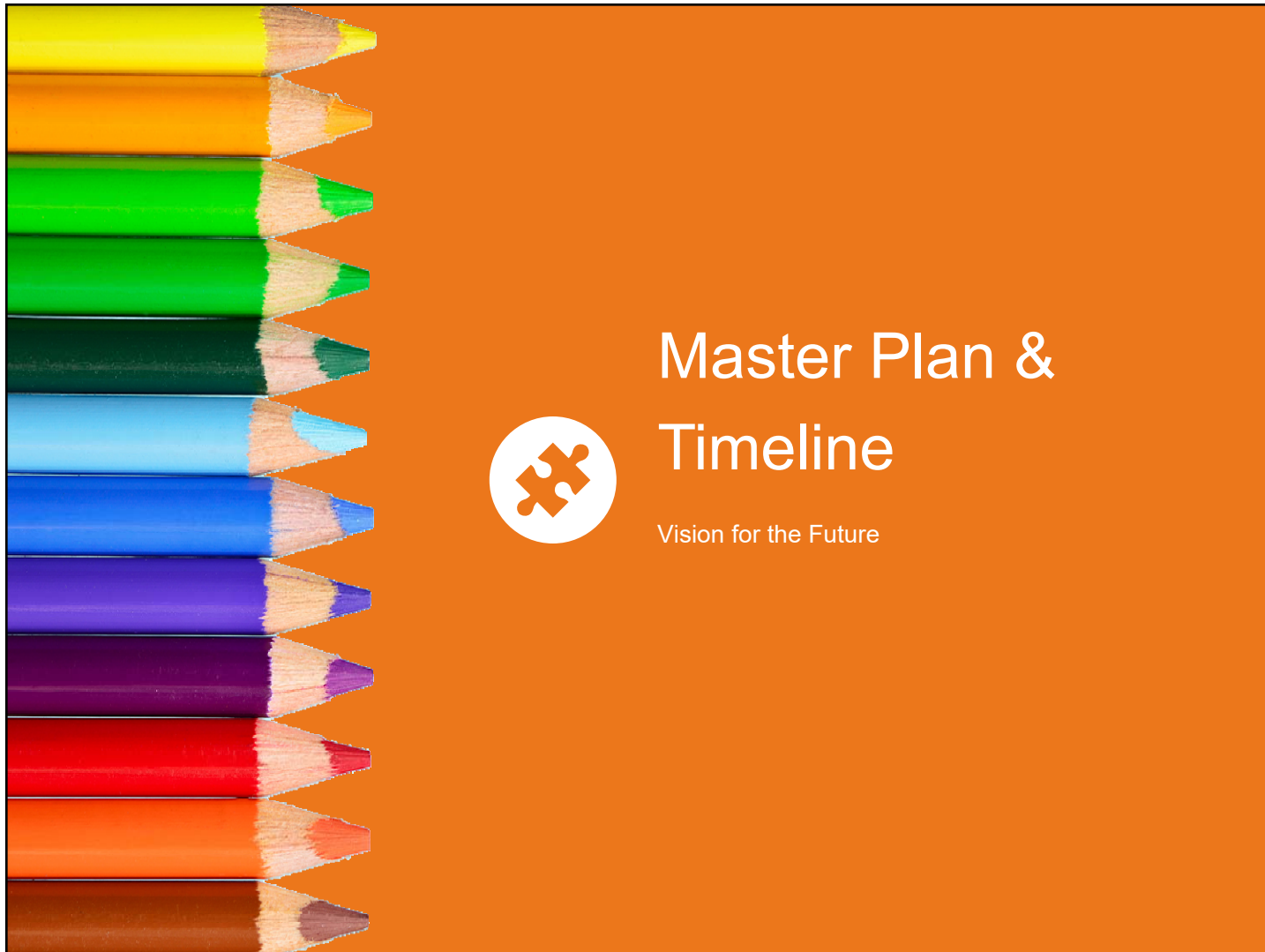
To meet growth and the educational needs of students in the community, the district would rely on Capital Outlay dollars alone without bond funding.

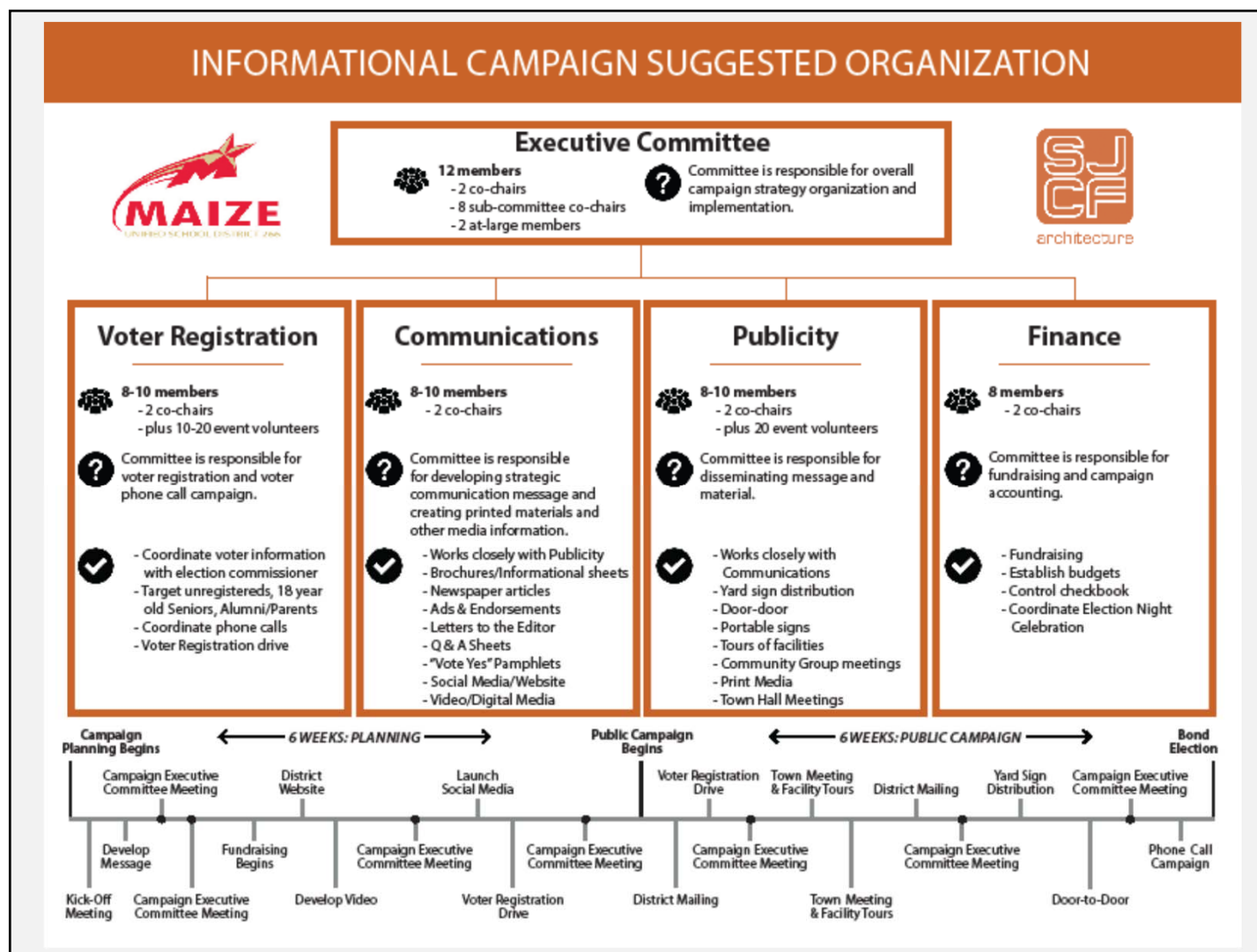


Limited Options

Facing limitations that would come with only using Capital Outlay funding, the district would determine the top priorities to only meet the most pressing needs.







Facilities Timeline

Steps to Meet the Needs of All Students

May 6, 2019

Maize Board of Education considers Facilities Committee proposal.

May - July, 2019

Kansas State Department of Education considers Maize USD 266 potential bond issue.

August / September 2019

The bond issue appears on the ballot during a special election for Maize USD 266 voters.

Fall 2021

With approval from all stakeholders, two intermediate schools open to welcome fifth and sixth grades and provide relief to the growing district.



Thank you.

We appreciate the opportunity to present our recommendation.



